

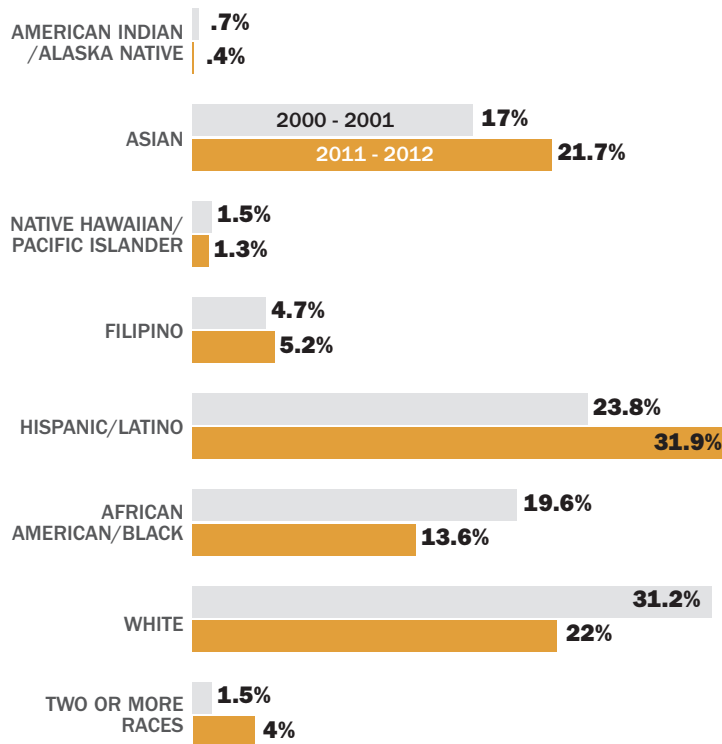


SCHOOL AGE CHILDREN AND YOUTH

Alameda County uses a comprehensive approach to improving the health and well being of its children and youth populations. County agencies and partners work together to understand and address the needs of the whole child to create optimum conditions for the success of every child. However, some children and youth continue to experience negative long-term impacts on their health, education, and economic well being.

RACIAL/ETHNIC BREAKDOWN OF ALAMEDA COUNTY STUDENTS (GRADES K-12)

The ethnic background of children in Alameda County public schools has changed over time, reflecting the overall demographic shifts in children throughout the State of California.

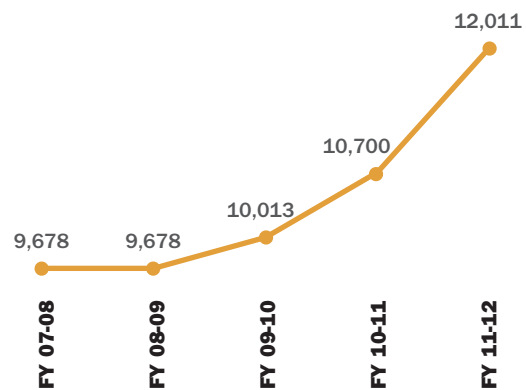


53%

OF 7TH GRADERS IN ALAMEDA COUNTY MET OR EXCEEDED STATE STANDARDS IN MATH IN 2010-11

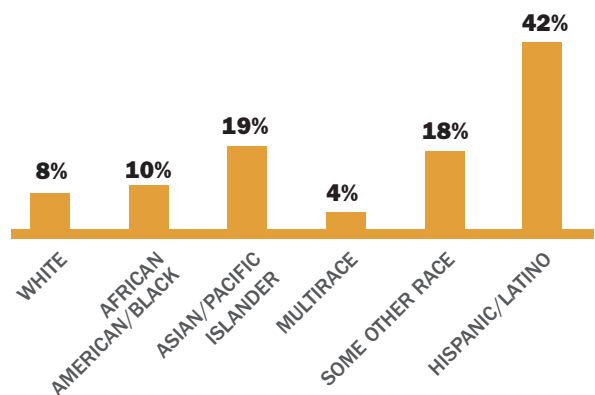
CHILDREN PROVIDED WITH MENTAL HEALTH SERVICES THROUGH THE ALAMEDA COUNTY HEALTH CARE SERVICES AGENCY

The number of children provided with mental health services through Alameda County Health Care Services Agency is increasing due to the expansion of the Early and Periodic Screening, Diagnosis, and Treatment (EPSDT) program.



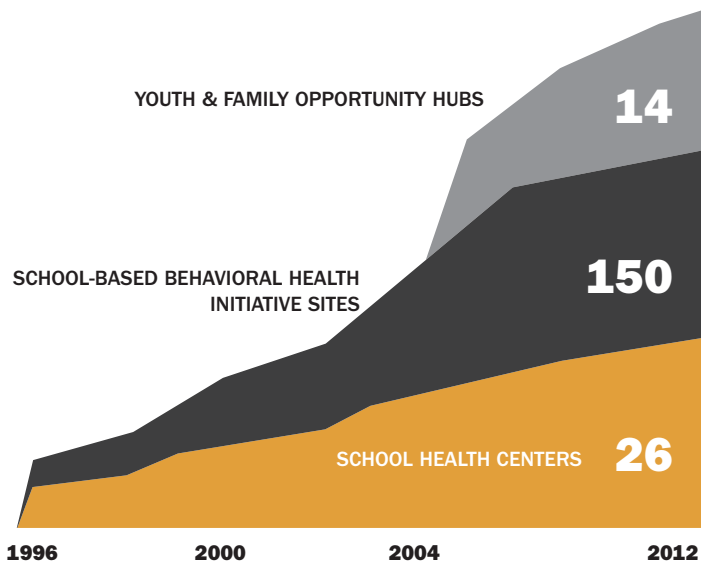
MORE LATINO CHILDREN ARE UNINSURED

While Latinos represent 32% of the child population in Alameda County, they over index in racial/ethnicity breakdowns of children who are uninsured.



DEVELOPMENT OF SCHOOL-BASED RESOURCE MODEL: HISTORY OF INVESTMENT

Alameda County has made a significant investment in services at schools throughout the county.



21%

OF STUDENTS IN ALAMEDA COUNTY PUBLIC SCHOOLS ARE ENGLISH LANGUAGE LEARNERS WHICH IS COMPARABLE WITH THE STATEWIDE PERCENTAGE OF 23%

Sources: 1) California Department of Education statistics 2) Children NOW analysis of Standardized Testing and Reporting (STAR) results, CA Dept of Education, Data Quest. Dept of Education, Data Quest 3) Alameda County Behavioral Health Care Services 4) U.S. Census, 2010 5) Center for Healthy Schools and Communities 6) California Dept. of Education English Learners by Grade and Language Data Files, <http://www.cde.ca.gov/ds/sd/sd/fileselsch.asp> (Dec. 2011); Language Census Data Files, <http://www.cde.ca.gov/ds/sd/sd/fileslcp234.asp> (Dec. 2011); CBEDS, <http://data1.cde.ca.gov/dataquest/> (Jun. 2011) 7) US Census, American Community Survey, 2008-10.

API SCORES OF SCHOOL DISTRICTS WITH THE PERCENTAGE OF KIDS ON FREE AND REDUCED PRICE LUNCH

In the 2010-11 school year, 41.6% of all public school students in Alameda County qualified for free or reduced price lunch.

SCHOOL DISTRICT	API SCORE	% RECEIVING AND REDUCED LUNCH
EMERY UNIFIED	700	84%
HAYWARD UNIFIED	716	68%
OAKLAND UNIFIED	726	81%
SAN LEANDRO UNIFIED	737	67%
SAN LORENZO UNIFIED	738	65%
MOUNTAIN HOUSE ELEMENTARY	743	48%
NEWARK UNIFIED	771	51%
NEW HAVEN UNIFIED	775	52%
BERKELEY UNIFIED	791	48%
LIVERMORE VALLEY UNIFIED	832	33%
ALAMEDA CITY UNIFIED	841	40%
CASTRO VALLEY UNIFIED	865	24%
FREMONT UNIFIED	876	22%
ALBANY CITY UNIFIED	882	18%
DUBLIN UNIFIED	884	12%
PLEASANTON UNIFIED	906	8%
PIEDMONT CITY UNIFIED	930	0%
SUNOL GLEN UNIFIED	939	9%

ICPC: SCHOOL AGE CHILDREN AND YOUTH

Alameda County Interagency Children's Policy Council's (ICPC) provides tools, guidance and resources for policy practice that focuses on the well being of children, youth and their families. A guiding tenet of ICPC's work is primary prevention, collective impact and equity. A guiding tenet of ICPC's work is primary prevention, collective impact and equity. ICPC is focusing on improving outcomes for school age youth by:

- Aligning and leveraging County departments and investments in schools regionally
- Increasing the dialogue and collaboration between school districts and County government
- Strengthening the pre-kindergarten to 3rd grade strategy
- Broadening family support and youth development work with a focus on equity
- Expanding School Based Health Centers and overall access to health care

Alameda County Interagency Children's Policy Council

1401 Lakeside Drive, Suite 1116 Oakland, CA 94612

Telephone: (510) 891-5729 Fax: (510) 208-9579

www.acgov.org/icpc