

# FUNDING

---

AB 109 REALIGNMENT

# WHO DECIDES?

01

## Community Corrections Partnership (CCP)

The CCP works through subcommittees to **create and implement a countywide reentry plan** that provides recommendations to maximize the effective investment of criminal justice resources and reduce recidivism by adjusting sentencing strategies, supervision practices, and service options to meet local needs.

02

## CCP Executive Committee

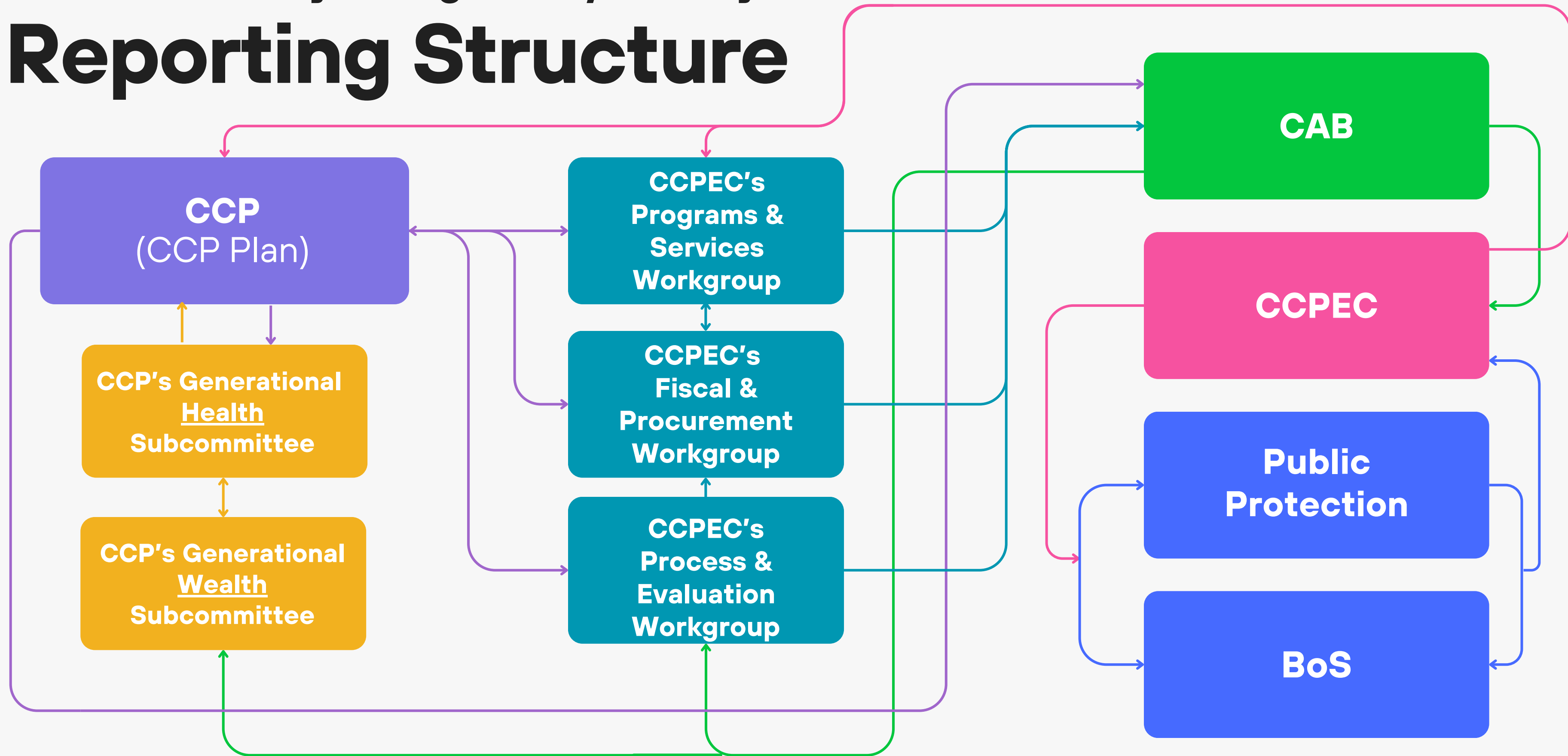
The CCPEC utilizes workgroups to strategize and make recommendations as to what changes need to be made, and the programs and services that should be funded to increase public safety and reduce recidivism. The CAB has the opportunity to advise the CCPEC on the decisions before them.

03

## Board of Supervisors

**Approves** funding decisions, contracts and the County's reentry plan, which requires a vote of four-fifths of the board to reject. If the plan is rejected, the plan goes back to the CCP for further consideration.

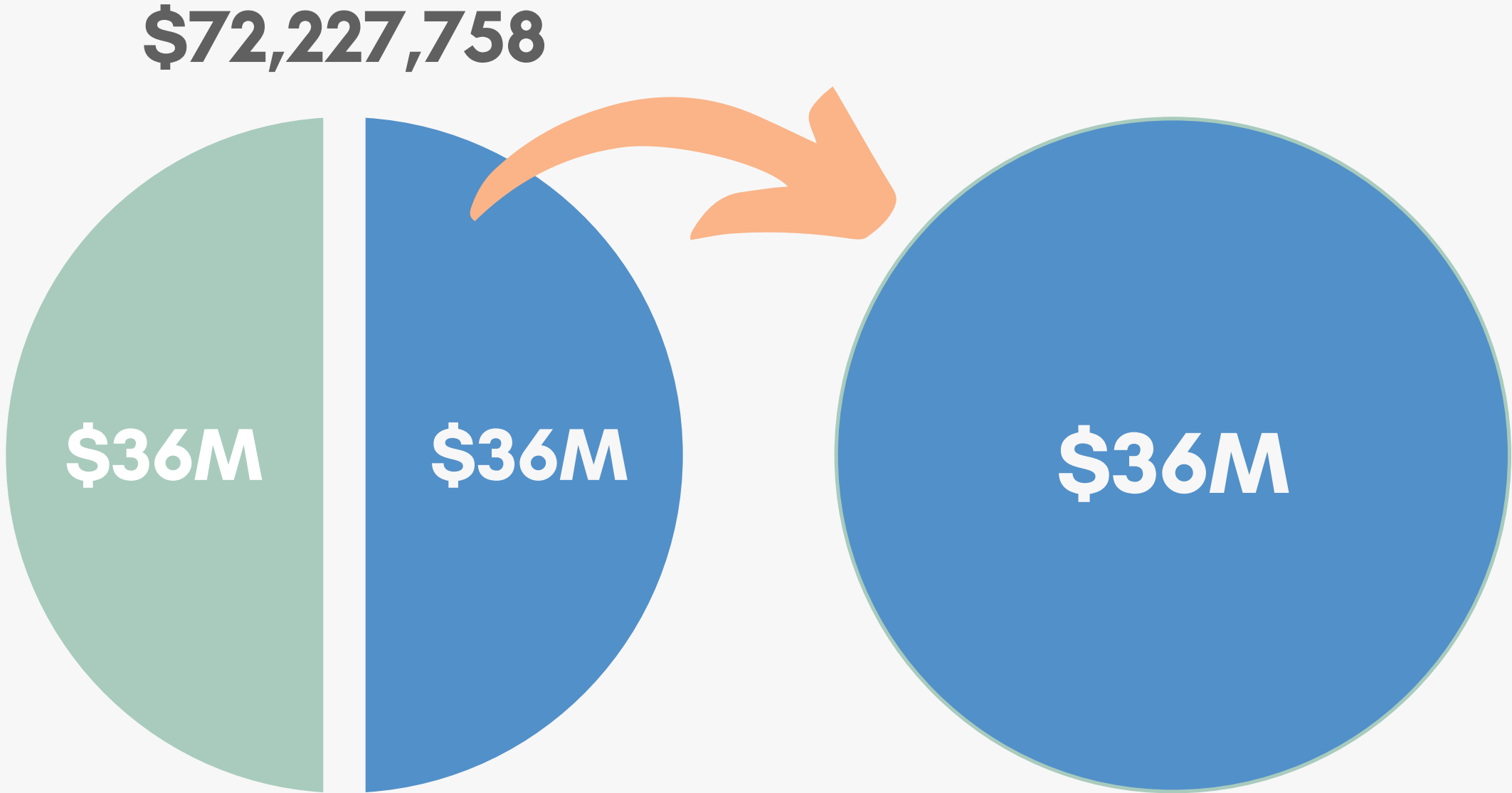
# Alameda County Realignment/Reentry Reporting Structure



**01: Create of the CAB (2013)**



**02: Dedicate 50% of Prior Year's Base to CBOs (2016)**

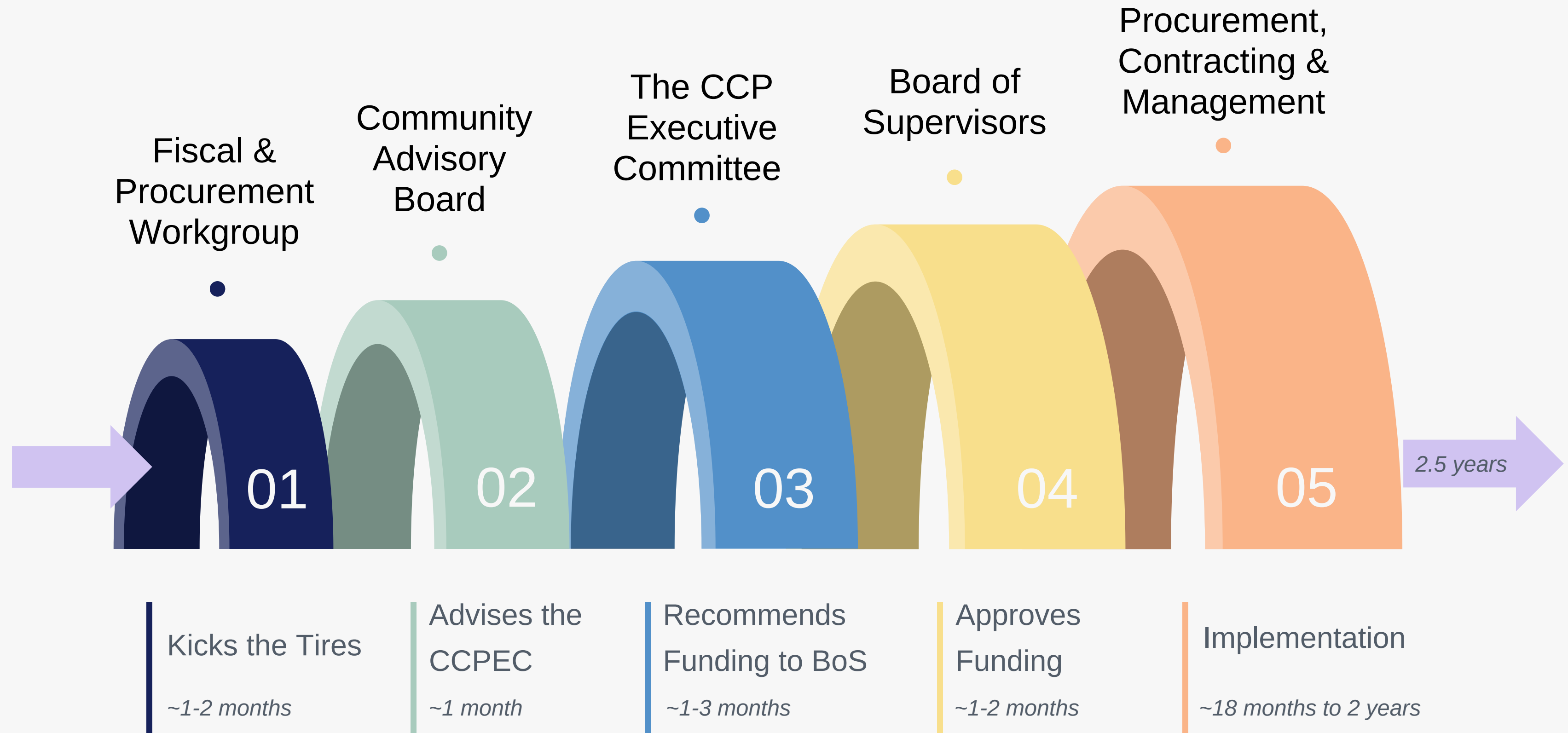


**Fiscal Year 23/24**  
(Base) **Allocation**  
**from the State**

**Fiscal Year 24/25**  
**CBO Allocation**

# NEXT STEPS

---



# THANK YOU



FOR LISTENING